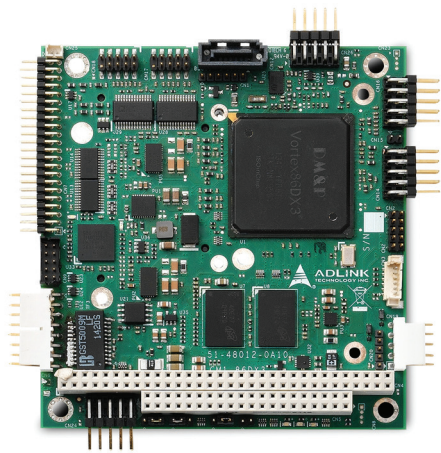


CM1-86DX3

Extreme Rugged™ PC/104 Single Board Computer with Vortex86DX3 System-on-Chip



Features

- Ultra low power, DM&P Vortex86DX3 SoC
- Full ISA bus support
- 2GB soldered DDR3L
- 1x GbE, 1x Fast Ethernet
- SATA, CFast
- VGA and 18/24-bit single channel TTL/TFT
- Supports Smart Embedded Management Agent (SEMA) functions

Specifications

Core System

CPU	Vortex86DX3 SoC, 1.0 GHz
Memory	2GB soldered DDR3L
BIOS	AMI BIOS, integrated in SoC
SEMA	Yes
Hardware Monitor	2x LAN, watchdog
Watchdog Timer	Yes, 3 different
Expansion Busses	PC/104 (ISA)

Video

VGA Interface	Yes
TTL/TFT	18/24-bit single channel

Ethernet

Standard	1x integrated PHY (10/100 Mbit) 1x Intel® i210IT (10/100/1000 Mbit)
----------	--

I/O Interfaces

USB	2x USB 2.0
SATA	1x SATA
Serial	2x RS-232/422/485 serial ports, 2x RS232 serial ports
PS2	Keyboard and mouse
GPIO	8x

Power

Input Power	AT mode (5VDC +/-5%)
Power Consumption	Approx. ~ 6 to 7 W
Power States	No ACPI

Operating Systems

Standard Support	WES2009, WES7, Linux, QNX
Extended Support	WEC7, WinCE 6.0 (on request)

Mechanical and Environmental

Form Factor	PC/104 Specification 2.6
Dimensions	96 mm x 90 mm (3.775" x 3.550")
Operating Temperature	Standard: 0°C to +60°C
Storage Temperature	-55°C to +85°C
Cooling	Passive
Humidity	10% to 90% (non-condensing)
Shock	Non-operating: 50G peak-to-peak, 11ms duration, MIL-STD-202G Method 213B
Vibration	Operating: 11.96 Grms, 50-2000 Hz, each axis, MIL-STD-202G Method 214A

Ordering Information

Modules

Model Number	Description/Configuration
CM1-86DX3	PC/104 with Vortex 86DX3, 2GB soldered DDR3, 10/100 Ethernet, GbE, CFast socket, TTL LCD and VGA display

Accessories

Model Number	Description/Configuration
CM1-86DX3-X-01	CM1-86DX3 cable kit
CM1-86DX3-TM-10	CM1-86DX3 Aluminum heatsink

Functional Diagram

CM1-86DX3

